



Superior handling &
storage solutions



Folding Large Container



Heavy-Duty Folding Container



Hygienic Design



For Clean and Secure Transport throughout the
Logistic Supply Chain

**Premium
Line**



Strong. Long Lasting. Reliable.

DFLC DOLAV Folding Large Container

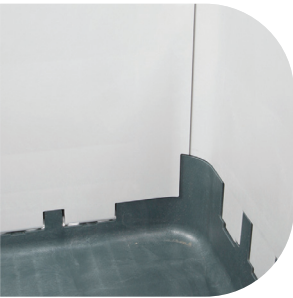
Dolav’s DFLC foldable bulk container is the next generation in premium Returnable Packaging solutions. With folding walls and an array of advanced features, the DFLC is specifically designed to reduce the cost of relocating or storing empty containers while providing maximum product protection and load stability

Features

- Foldable large container for optimal storage and portability
- Three integrated runners for safe tipping
- Stackable and fully compatible with the Dolav ACE and Classic box pallets
- 2:1** 2:1 folding ratio
- Patented inter-locking system prevents buckling under heavy loads
- Single skin allows fast cool down in cold stores
- Four-way forklift entry
- 100% recyclable

Hygienic

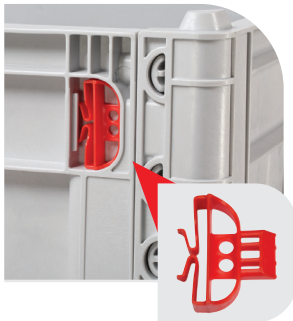
Hygienic design with smooth side walls and three integral moulded runners prevent traps for dirt or bacteria, making the DFLC Ideal for the food and agriculture industries. Single wall construction further prevents dirt traps if the container is damaged and also allows for fast cooling of the container’s contents.



Hygienic design
Featuring smooth interior walls with rounded edges

Durable, High-Performance Construction

The DFLC is made with structural foam injection moulded polypropylene (PP) for high impact resistance and long lasting durability. The container’s unique technology offers a longer lifespan for greater ROI and significantly reduces product damage during transit.



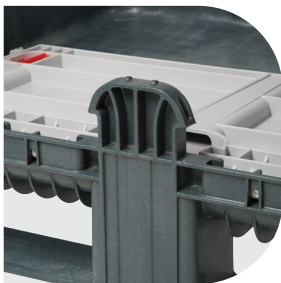
Integrated handles
Squeeze both handles to unlock and fold



Three integral runners
Stronger design for secure tipping

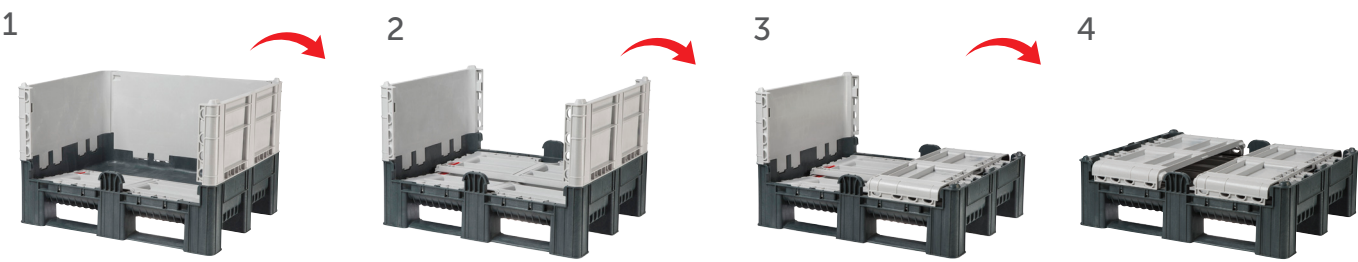


Anti-slip corners
Safe and secure stacking



Patented locking device
Prevents buckling under heavy loads

Folding Instructions



Simply squeeze the handles of each long side and fold down then fold the ends.

Removable Walls for Thorough Cleaning



Squeeze the handles to angle long side to enable you to lift out then repeat on other side and ends

Land and Sea Transport

Semi Trailer

Dimensions[m] [Inside]	13.6x2.5x2.5	
DFLC in one layer	26	
Total DFLC [Erected]	78	
Total DFLC [Folded]	156	

Sea Container

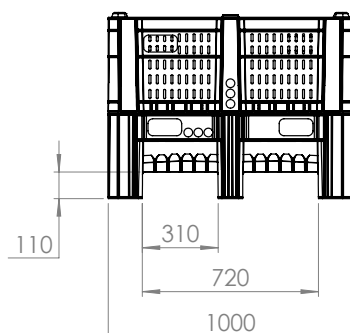
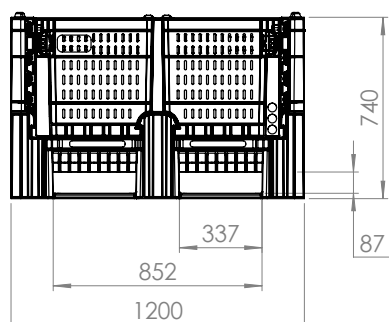
Qty. in container: 20' (folded units)	61
Qty. in container: 40' / 40'hc (folded units)	154



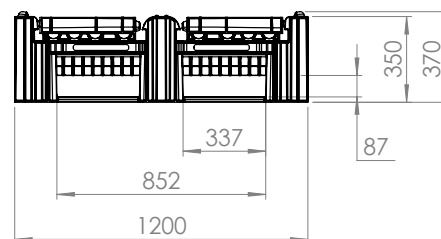
Logo options

The company name, logo and sequential numbers can be hot stamped onto the Dolav for easy identification.

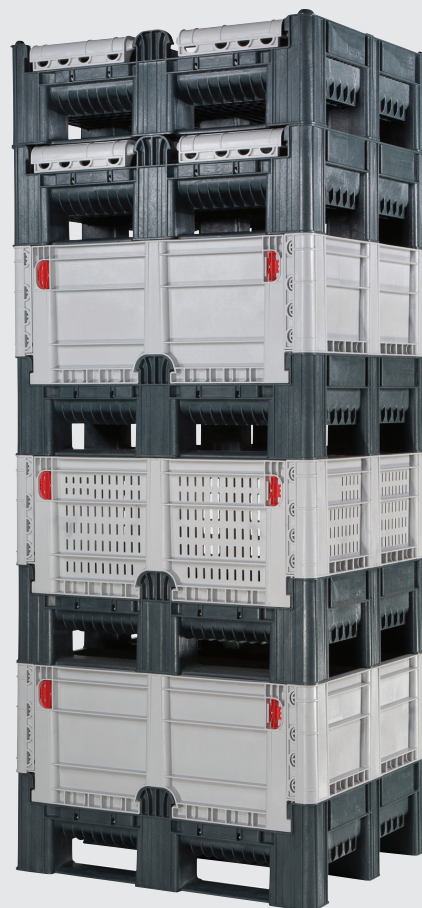
Technical Data



Folded



Compatible with
DOLAV ACE



	Solid/Perforated/Combination
External dimensions (LxWxH) mm	1200x1000x740
Internal dimensions (LxWxH) mm	1120x920x580
Folded height (mm) (2:1)	370
Volume (litre)	600
Tare weight (kg)	40.5
Max load (kg)	750
Max. stack load (kg)	4000
Raw material	PP
Temperature range	-20°C - +40°C
Compatibility	ACE and Classic

*Due to deviations in the manufacturing process, tare weight may vary by $\pm 1.5\%$.

*Dimensions may vary by $\pm 1\%$.

DOLAV®

Tried. Trusted. Best.



Dolav Plastic Products, Kibbutz Dvir M.P. HaNegev 8533000

☎ 972-72-2450700 📠 972-8-9918710 ✉ dolav@dolav.com 🌐 www.dolav.com

Worldwide offices: Belgium, China, France, Germany, Hong Kong, Ireland, Israel, Italy, Russia, Spain, The Netherlands, UK, USA

